

G-MATRIX PRO SOFTWARE

Risk warning

Before you begin trading on Real account please carefully consider your investment goals, risk and experience you have. It should be noted that Forex is a leverage based market. It should be remembered that leverage can work both in your advantage and disadvantage as well. Therefore there is high risk of losing a part or all of your financial input placed on your account and because of that you should remember to trade with the amount of money which you can lose without taking any influential financial damage.

Disclaimer

Signals generated by the system are not investment recommendations. All materials included on the website, as well as all system components (indicators, instruction manual) are for educational purposes only. Creators of the system will not take any responsibility for any profit or loss/damage caused by using the system.



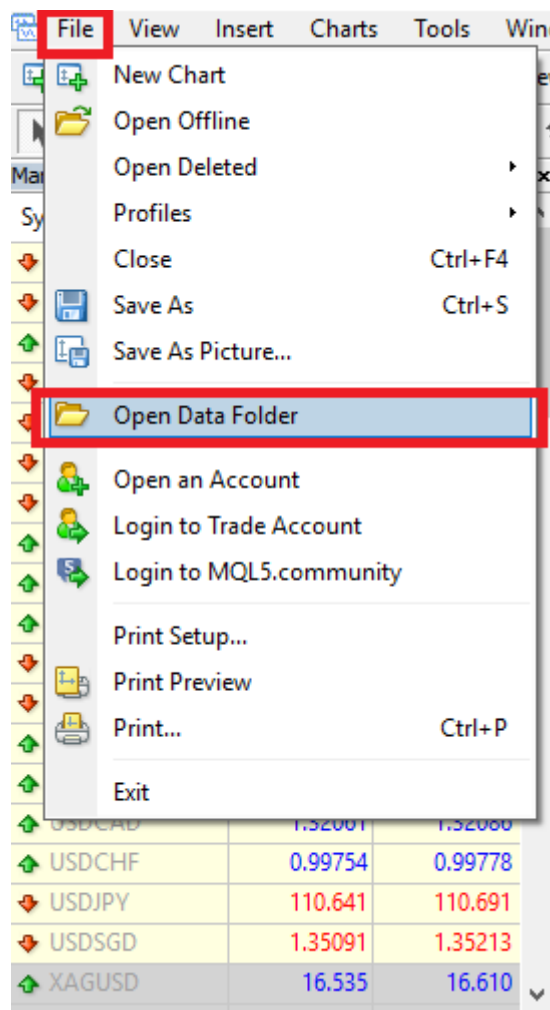
Copyright © 2026 www.fxstrader.com All rights reserved.

Unless otherwise indicated, all materials on these pages are copyrighted.

All rights reserved. No part of these pages, either text or image may be used for any purpose other than personal use. Therefore, reproduction, modification, in any form or by any means, electronic, or otherwise, for reasons other than personal use, is strictly prohibited without prior written permission.

1. Installation proces.

- Open your MT4
- Click 'File/Open Data Folder' from the top tab.



- Copy templates files to the 'Templates' folder.

config	15.06.2018 14:09
history	08.05.2018 16:03
logs	16.06.2018 09:40
MQL4	08.05.2018 16:01
profiles	13.06.2018 10:20
templates	15.06.2018 22:52
tester	13.06.2018 10:44
origin	08.05.2018 16:01

- Copy indicator files to the 'MQL4>Indicators' folder.

Experts	08.05.2018 16:02
Files	08.05.2018 16:01
Images	08.05.2018 16:01
Include	08.05.2018 16:01
Indicators	15.06.2018 22:29
Libraries	08.05.2018 16:02
Logs	16.06.2018 09:40
Presets	08.05.2018 16:01
Projects	08.05.2018 16:01
Scripts	08.05.2018 16:02

- Restart your MT4

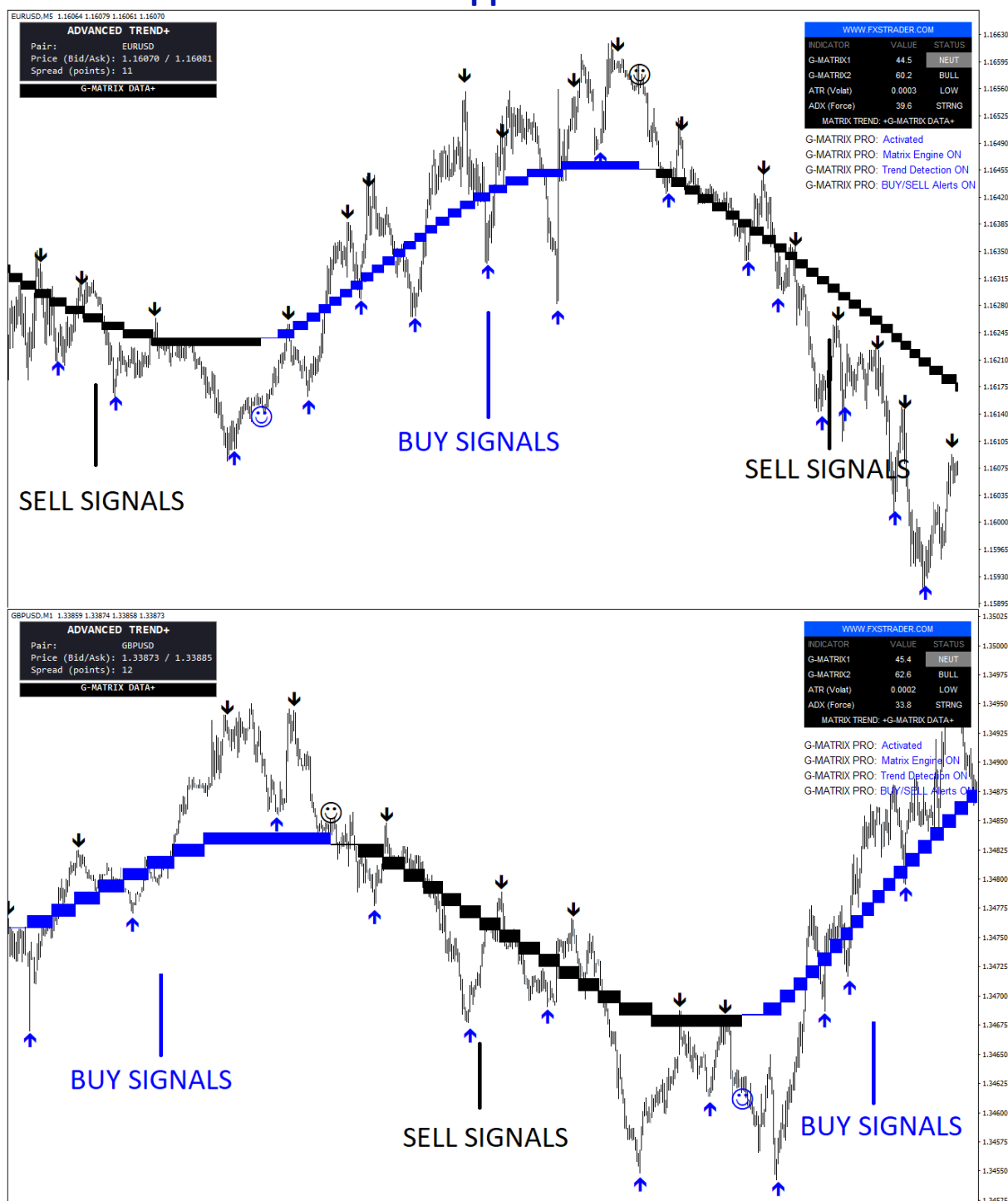
- Open your favourite chart. Press the right mouse button and pick G-MATRIX PRO template.

ENTRY RULES

Entries are very easy to spot. Software provides simple BUY and SELL signals.

When matrix snake is black, software will alert you when sell signals appear.

When matrix snake is blue, software will alert you when buy signals appear.



ADVANCED SETTINGS

Let's see advanced settings of the entry indicator.

Please note that default settings are recommended and works for mostly traders (no changes needs to be done).

Custom Indicator - G-Matrix PRO

About Common Inputs Colors Visualization

Variable	Value
Forex FBS Arrows ==>>	=== FBS Arrows ===
Use FBS Arrows	true
Frequency	25
=====	=== FBS Arrow Alerts ===
FBS Arrow signal alerts	false
PopUp	false
Email	false
PUSH	false
Forex Breath Trend ==>>	=== FBS Trend ===
Use FBS Trend	true
=====	=== FBS Trend Alerts ===
Trend change alerts	false
PopUp	false
PUSH	false
==*=*=*=*=*=*=	==*=*= Signal Alerts with Trend ==*=
Arrow signal with trend alerts	true
PopUp	true
Email	true
PUSH	true

Load Save

OK Anuluj Reset

Frequency: the sensitivity of the signals. Default (25).
The higher the number, the more conservative signals.

FBS Arrow signal alerts: those are alerts for ALL arrows (also those that are not in line with the Matrix snake). Disabled by default.

Use FBS Trend: Matrix snake enabled/disabled.

Trend change alerts: Matrix snake change alert. (disabled by default)

Signal alerts with trend: (show alers only when all filters are in line). Enabled by default.

STOP LOSS

Stop loss should be placed:

- Below the last swing low for BUY trades
- Above the last swing high for SELL trades

TAKE PROFIT

Take profit should be placed:

- R:R=1:1 when market is normal (low or standard volatility)
- R:R=2:1 when market is fast (high volatility)



If you need any assistance let us know!
support@fxstrader.com